

HV-F22CL/ HV-F31CL
RS-232C Control Software

1. System Requirements

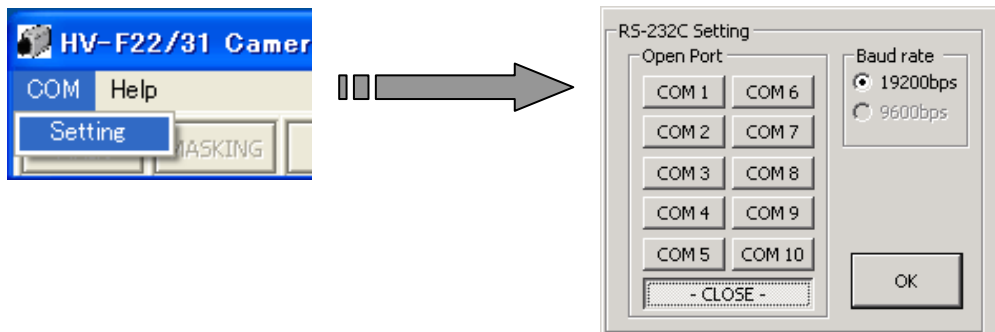
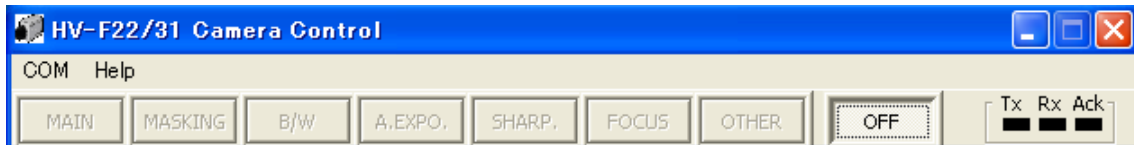
CPU:	Intel Celeron 533MHz or more
Memory:	128M or more
OS:	Windows98SE / Me /2000 /XP
I/O:	Either of COM1~COM10

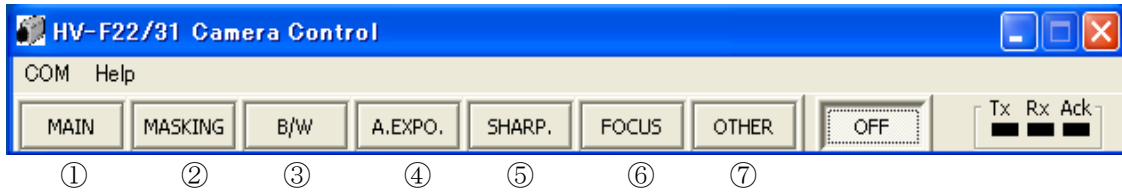
2. The Use of Control Software

Starting the Program



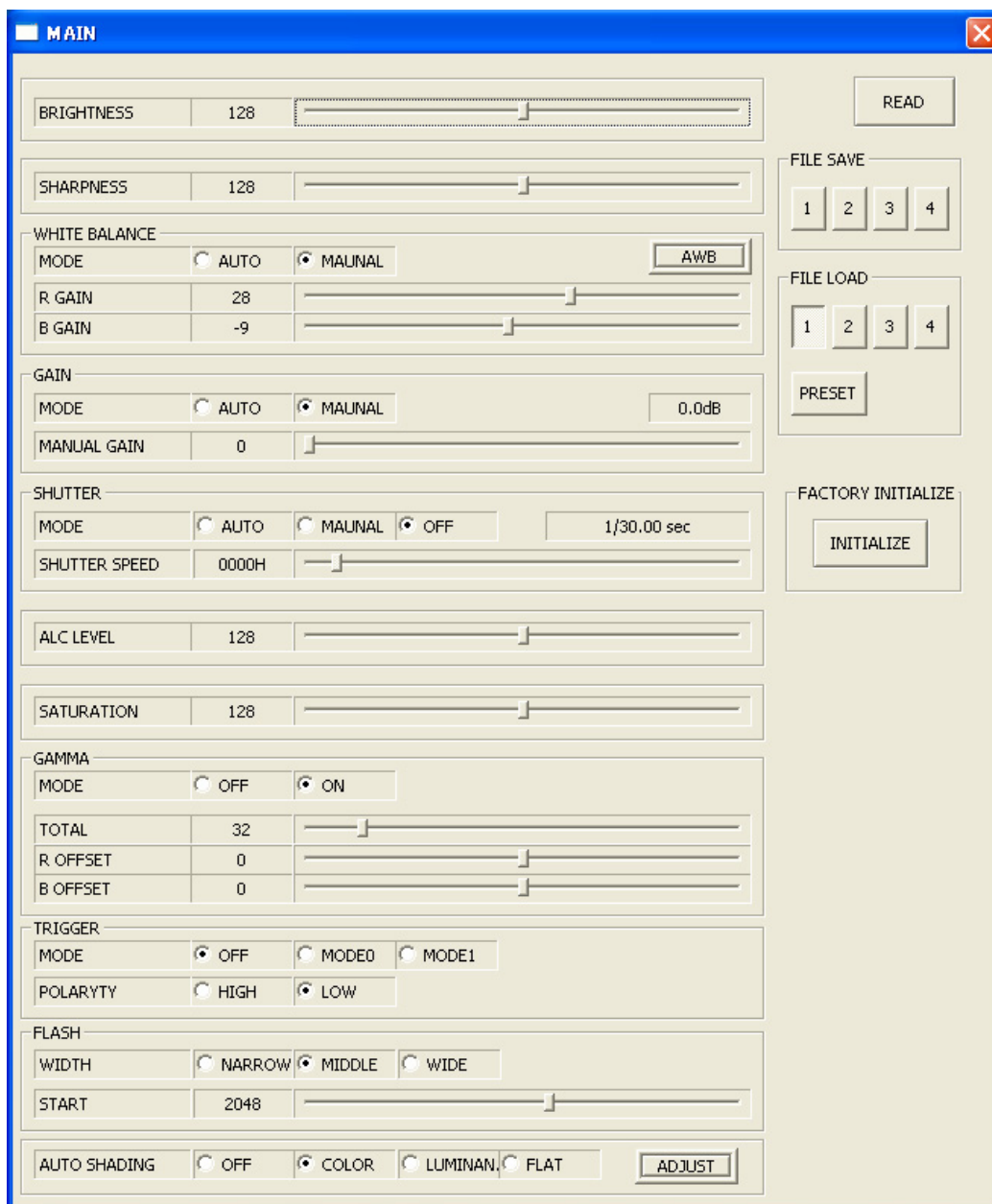
Open the Viewer from the supplied CD. Click on the icon for the camera you are using. Start this software (HVF22_F31.exe) and click the “COM” tab. Select “Setting” on the pull down list, so it shows the chosen dialogue “RS-232C SETTING.” Choose the COM port, and then click the “OK” button.





(①~⑦) Each setup window appears when each button is pushed.
 For specific details of each function, see the “HV-F22CL/HV-F31CL” operation manual.

① MAIN function



② MASKING function

MASKING ON OFF READ

SATURATION (MASKING)

R	0	<input type="text"/>
Y	0	<input type="text"/>
G	0	<input type="text"/>
C	0	<input type="text"/>
B	0	<input type="text"/>
M	0	<input type="text"/>

HUE (MASKING)

R	0	<input type="text"/>
Y	0	<input type="text"/>
G	0	<input type="text"/>
C	0	<input type="text"/>
B	0	<input type="text"/>
M	0	<input type="text"/>

③ BLACK BALANCE & WHITE GATE function

BLACK BALANCE & WHITE GATE READ

BLACK BALANCE ABB

R BLACK	0	<input type="text"/>
B BLACK	0	<input type="text"/>

WHITE GATE INDICATE

MODE OFF ON

H POSITION	0	<input type="text"/>
V POSITION	0	<input type="text"/>

④ AUTO EXPOSURE* function

AUTO EXPOSURE READ

PEAK/AVERAGE 0:100 25:75 50:50

SPEED SLOW MIDDLE FAST

GATE OFF ON

GATE SET

⑤ SHARPNESS function

SHARPNESS
✕

FREQUENCY	<input checked="" type="radio"/> LOW	<input type="radio"/> MID.	<input type="radio"/> HIGH	READ
LEV. DEPENDENCY	15	<input type="text"/>		
CLISP	18	<input type="text"/>		
H/V BALANCE	50	<input type="text"/>		

COLOR DTL Ch 1

CH 1	<input checked="" type="radio"/> OFF	<input type="radio"/> ON					
PHASE	R	M	B	C	G	Y	AUTO SETUP
	128	<input type="text"/>					
WIDTH	128	<input type="text"/>					
LEVEL	0	<input type="text"/>					

COLOR DTL Ch 2

CH2	<input checked="" type="radio"/> OFF	<input type="radio"/> ON					
PHASE	R	M	B	C	G	Y	AUTO SETUP
	128	<input type="text"/>					
WIDTH	128	<input type="text"/>					
LEVEL	0	<input type="text"/>					

⑥ Focus detection function

Focus detection
✕

FOCUS GATE		INDICATE	READ
H POSITION	0	<input type="text"/>	
V POSITION	0	<input type="text"/>	
H SIZE	0	<input type="text"/>	
V SIZE	0	<input type="text"/>	

(FOCUS) Detection data

Value	2416
-------	------

DETCT (continue)

⑦ Other function

OTHER FUNC ✖

DNR	<input checked="" type="radio"/> OFF	<input type="radio"/> MODE1	<input type="radio"/> MODE2	READ
COLOR BAR	<input type="radio"/> OFF	<input checked="" type="radio"/> ON		
NEGA	<input checked="" type="radio"/> OFF	<input type="radio"/> ON		
EXT IN 75 ohm	<input type="radio"/> OFF	<input checked="" type="radio"/> ON		
PICEL CONCEAL.	<input checked="" type="radio"/> OFF	<input type="radio"/> ON		
H PHASE	128	